

INSTALLATION SHEET FOR MS MANUAL SELECTOR VALVE KEEP WITH PRODUCT UNTIL INSTALLED

ADDITIONAL SHEETS MAY BE PRINTED OUT FROM OUR WEBSITE WWW.BRAND-HYD.COM UNDER PRODUCT CATALOG SECTION

Mounting Surface – The valve must be mounted on a flat surface. It is important not to bend or twist the casting when mounting because this may cause the comp spool to bind. On rigid surfaces we recommend washers between casting and mounting surface.

Can I paint my valve? – Painting the valve is okay as long as all the ports and spool are properly plugged or masked off.

Pipe thread sealant – Warranty is void when Teflon tape is used to seal pipe threads. This is because Teflon tape is a friction reducing agent which allows customers to over-torque fittings. We recommend using a sealant that does not include friction reducing agents i.e. Lead Plate.

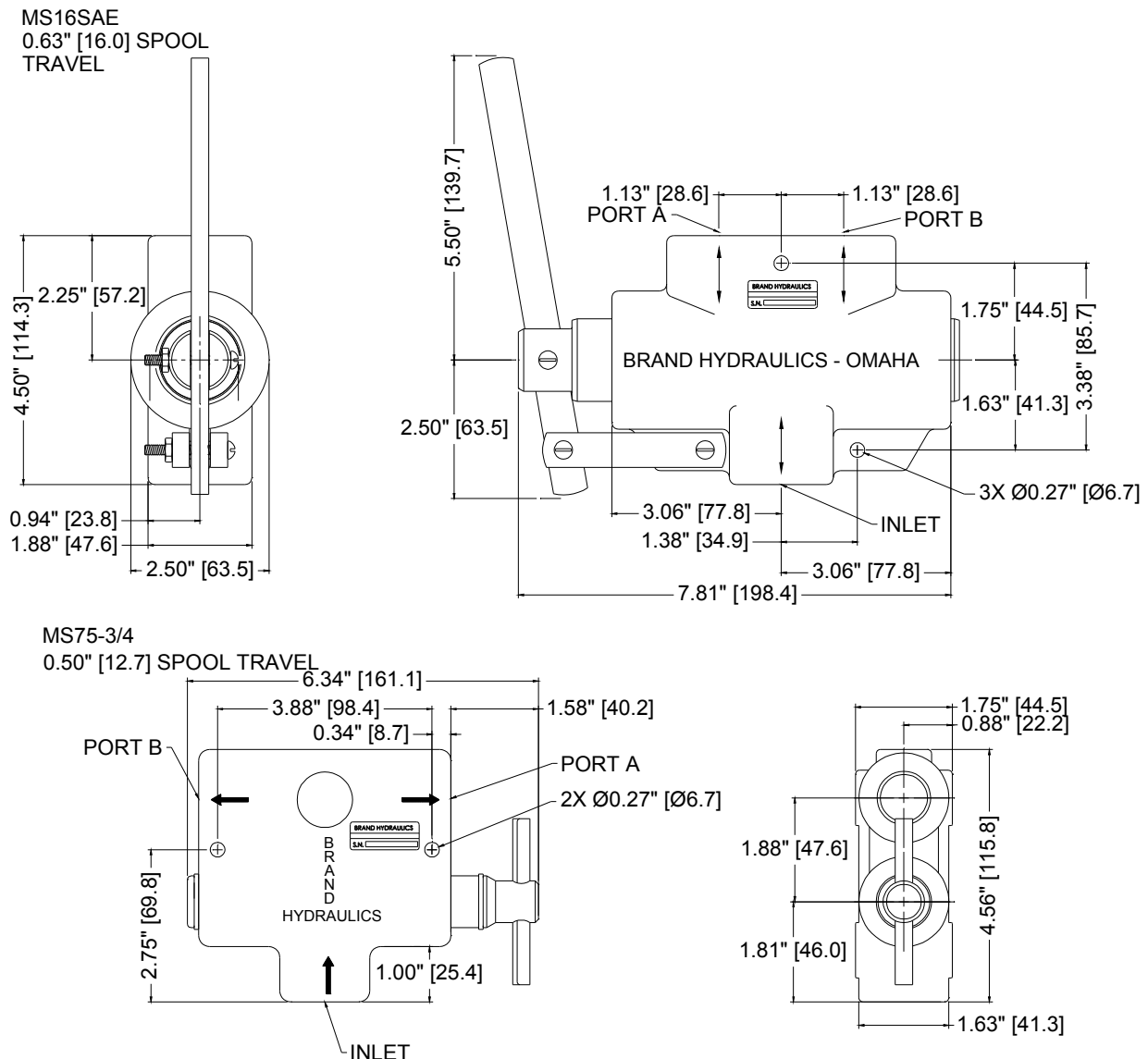


Figure 1: Dimensional Data for MS valves in inches & [millimeters].