

BRAND
HYDRAULICS Co.

Made in the Heartland of America
Serving the World
Engineering & Manufacturing Solutions

Current Steering Module

ECM0001



ISO 9001:2008 WITH DESIGN
Certificate #02.002.1



402.344.4434 • www.brand-hyd.com

ECM0001

Current Steering Module

FEATURES:

- Eliminates the need for double pole double throw switches (Bussed Cathode Design) to control a Brand Series 36 or Series 38 stack valve.
- Compatible with 12 or 24 VDC systems.
- Easy installation with 0.250" quick tab terminals.
- Potted enclosure helps protect the internal circuitry from mechanical and environmental stress.
- Uses 10% less wire than equivalent DPDT systems.*
- Simplifies the replacement of stack valves that do not use an unloaded inlet.
- Extends switch contact life; each output terminal has inductive kickback suppression.



DESCRIPTION:

The ECM0001 was designed to simplify the wiring of Brand Series 36 and Series 38 stack valves. When a switch input is activated a corresponding work section coil terminal and the inlet coil output terminals become energized. The module is set up to run up to a 6-spool stack valve. Two ECM0001 modules can be daisy chained for control of up to 12 sections.

SPECIFICATIONS:

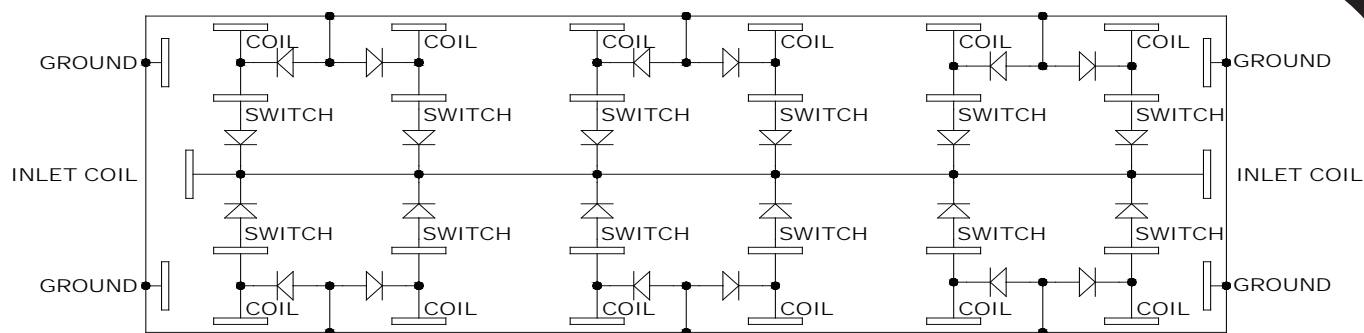
Voltage Supply	10-35 VDC
Max Continuous Output Current / Terminal	2.5 Amps / Coil Terminal / Inlet Coil Terminal**
Inputs	12 Switch Input Terminals 4 Common Ground Terminals
Outputs	12 Coil Output Terminals 2 Common Inlet Coil Output Terminals
Operating Temperature	-20°C - 70°C (-4°F - 158°F)
Storage Temperature	-40°C - 70°C (-40°F - 158°F)
Environmental Rating	IP67
Weight, Fully Assembled	0.148 kg (0.326 lb.)
Fuse	Customer supplied,
Type	5A, Fast Acting ***
Series	AGC, GMA, ATM, ATC, ATO are all acceptable

*10% savings based on wiring for a 6-section stack valve. Switches are less than 3 inches apart, and located 10 feet from the power source and stack valve.

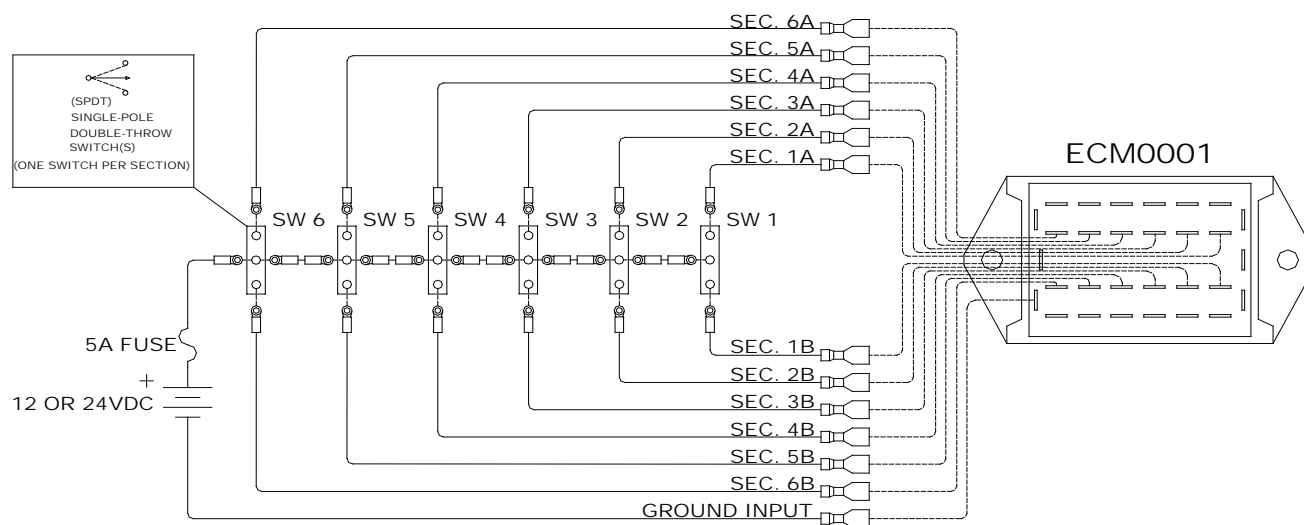
**Inlet coil output terminals must be limited to a combined 2.5A load. The inlet coil output buss current must not exceed 2.5A.

*** 5A fuse based on controlling a 1-12 spool Brand Series 36 or Brand Series 38 stack valve.

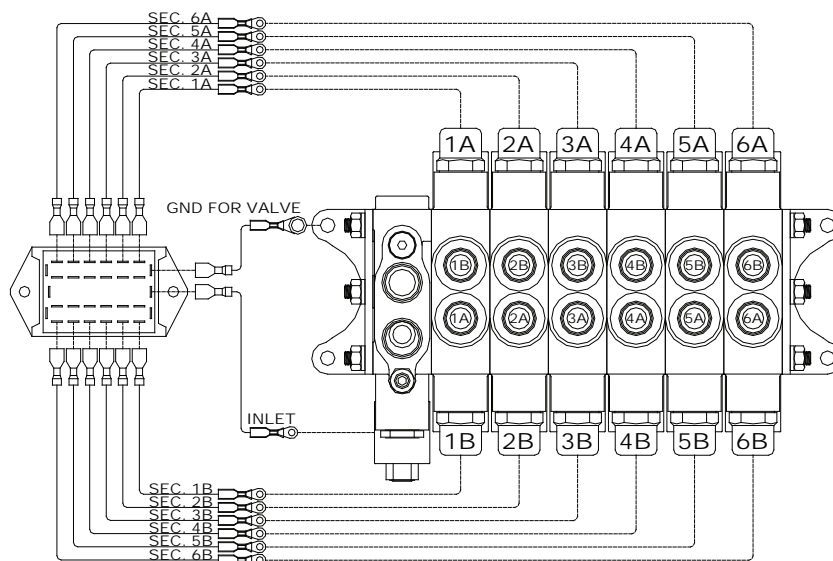
SCHEMATIC:



SWITCHES TO MODULE WIRING:



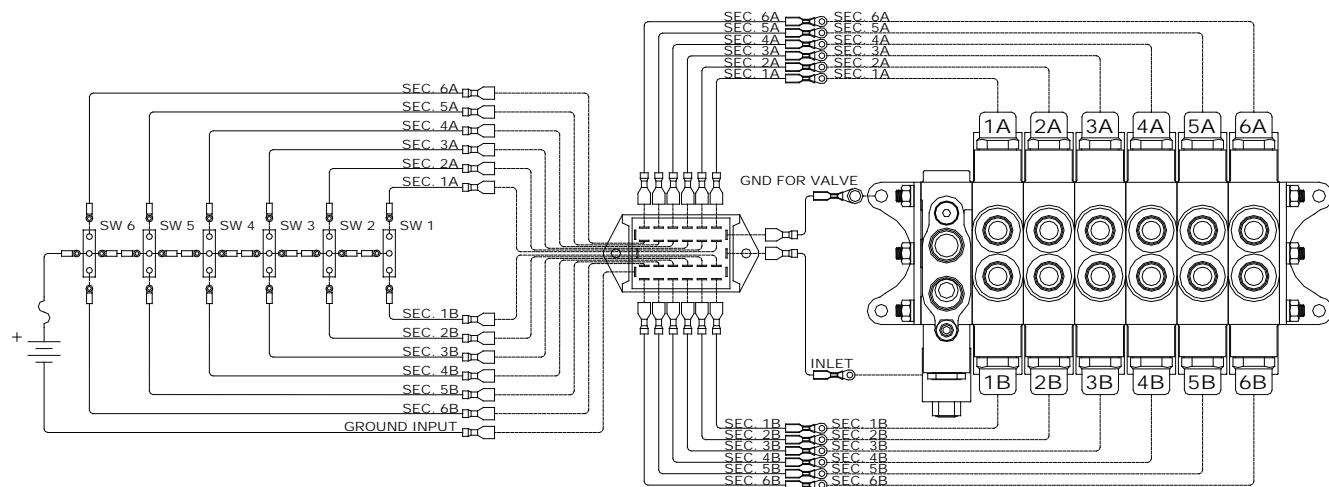
MODULE TO VALVE WIRING:



ECM0001

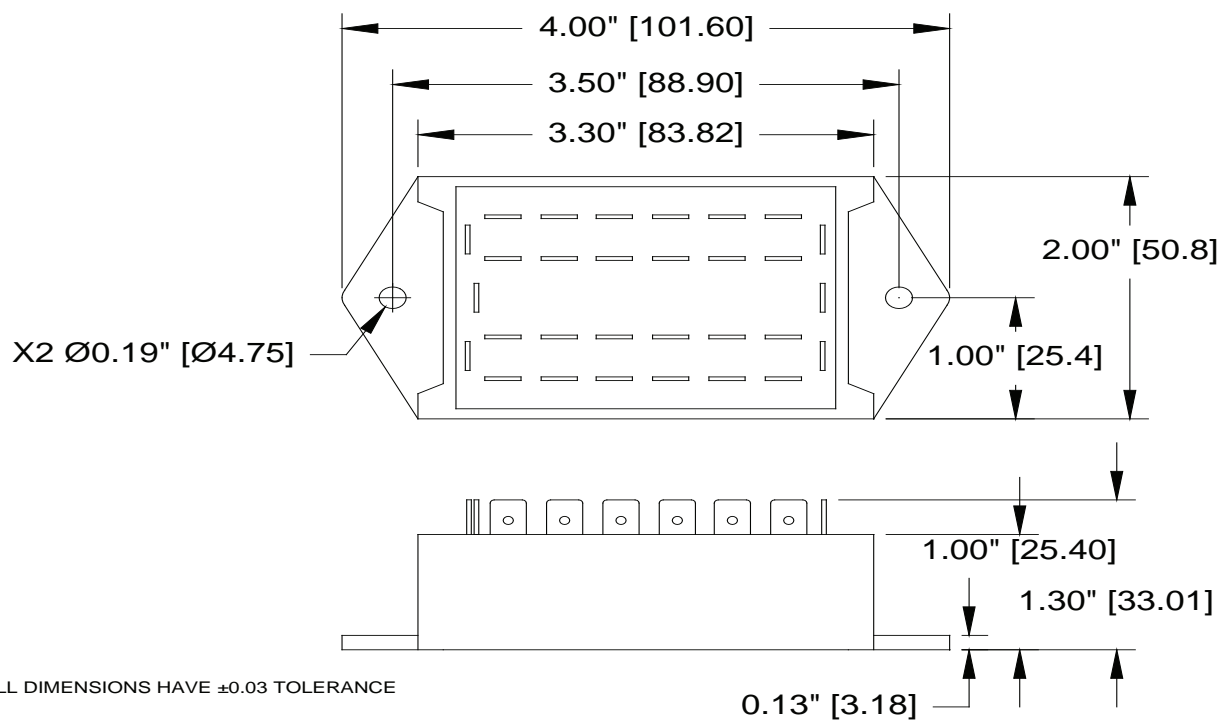
Current Steering Module

COMPLETE SYSTEM WIRING:



Note: Valve shown with optional C503-00000 coil

DIMENSIONAL DATA (ECM0001): inches & [millimeters]



PARTS AND ACCESSORIES:

SWITCHES

E1252.....Toggle switch, SPDT, (ON)-OFF-(ON), #6 screw terminals

E1253.....Toggle switch, SPDT, ON-OFF-ON, #6 screw terminals

E1758.....Switch boot seal, black, use with E1252 and E1253

ATTENTION:

NOTES:

- Brand Hydraulics recommends the use of dielectric grease on all terminals.
- Switches, wiring, fuses, and terminals are not included, but are available.

CAUTION:

- Only mount module on flat surfaces. Mounting to uneven surfaces can cause mounting ears to break.
- Not designed for use in AC voltage systems.

It is the purchaser's responsibility to determine the suitability of any Brand Hydraulics product for an intended application, and to insure that it is installed in accordance with all federal, state, local, private safety, health regulations, and codes and standards. Due to the unlimited variety of machines, vehicles, and equipment on which our products can be used, it is impossible for Brand Hydraulics to offer expert advice on the suitability of a product for a specific application. We believe that it is our customer's responsibility to undertake the appropriate testing and evaluation to prevent injury to the end user.

All product, product specifications and data are subject to change without notice to improve reliability, function or design or otherwise.