



**BRAND**  
**HYDRAULICS Co.**

Made in the Heartland of America  
Serving the World

Engineering & Manufacturing Solutions



# SEFC

Stackable Electric  
Flow Control

## Specifications:

- 3000 psi (207 bar) rating.
- Standard port size #12SAE (1-1/16-12).
- 10-Micron filtration recommended.
- Pulse frequency (90 to 115 hz).
- Coil
  - 12 VDC standard (24 VDC).
  - 9.6 ohms (48 ohms).
  - 15 watts (15 watts).
  - 1.0 amp max. (0.5 amp max.).



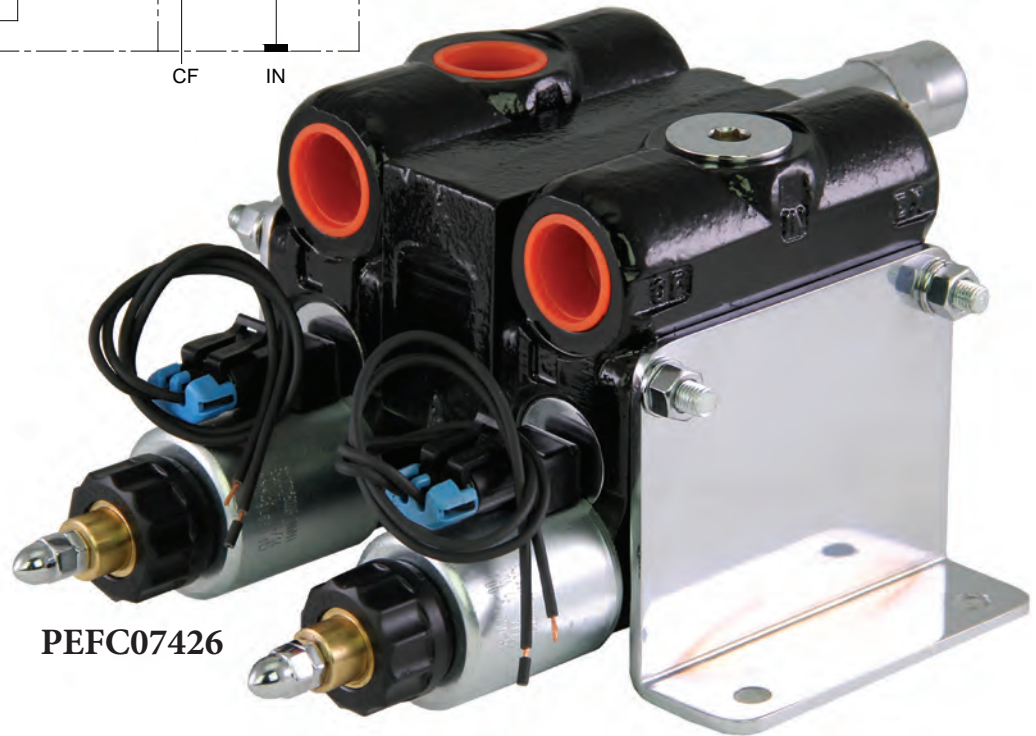
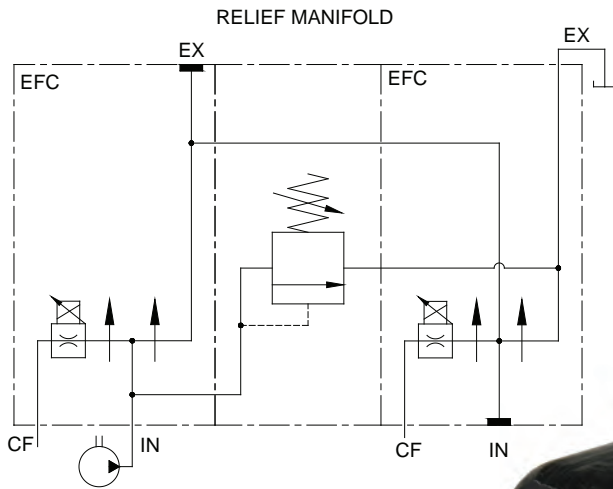
PEFC07426



ISO 9001:2008 WITH DESIGN  
Certificate #02.002.1



402.344.4434 • [www.brand-hyd.com](http://www.brand-hyd.com)



### MATERIALS:

- Hardened Alloy Steel Ball
- Chrome Alloy Steel Ball
- Ductile Cast Iron Body
- Heat Treated Steel Spools
- Buna N O'Rings

### FEATURES:

- PARALLEL OR SERIES flow paths are possible.
- SPECIAL MODIFICATIONS are easily made to fit your particular application.
- O'RING PORTS to eliminate leakage.
- OPTIONAL RELIEF SECTION provides protection of circuit.

**SEFC – GENERAL INFORMATION:**

The Brand, SEFC allows the customer to stack EFC's in series or parallel. Relief sections are also available for hydraulic circuit protection. Advantages of stacking EFC's are reducing leakage points, fewer hoses and smaller packages. Please contact the Brand Engineering Department to help define the best way to stack your electric flow controls.

One of the best applications for this valve is the salt or sand spreader. For this application, stack two EFC's and one relief section. The first EFC controls the speed of the spinner and the second controls the speed of the chain driven bed. By using this package you reduce costs, eliminate unnecessary hoses/fittings and reduce leakage points.

**WIRING PACKAGES** – can be produced to meet any customer's requirements from simple to complex. Packages can consist of handheld, stationary or a combination of both. They can be for mobile or industrial applications. We can supply packages from coiled cables to special labels and nameplates to give you a true out-of-the-box ready to go package. Please call our engineering department and let us know what your specifications are so that we can design a custom package to suit your needs.

**ACCESSORY ITEMS** – All tie rod kits contain rods, foot brackets, lock washers and hex nuts. Please be sure to note the correct tie rod torque spec is 85 inch lbs. (9.6 N m).

**ASSEMBLY MODEL CODES** – and list prices for complete assemblies will be issued by the factory upon the request of an authorized Brand Distributor. All model codes that are issued become proprietary to the requesting distributor. Model codes will not be descriptive in nature, but shall be of a sequential numerical type.

Paint (Optional) (P) painted black (other colors available, consult factory), (MP) epoxy coating.

## DIMENSIONAL DATA: Inches & [millimeters] SEFC

TWO EFC'S IN SERIES WITH RELIEF PROTECTION

