

BRAND
HYDRAULICS Co.

Made in the Heartland of America
Serving the World

Engineering & Manufacturing Solutions

POC76-3/4

Pilot Operated Check Valve
(or Counter Balance Valve)

Specifications:

- Pressure rating 3000 psi (207 bar).
- Rated for 0-30 gpm (0-114 lpm).
- Weighs 5 lbs (2.3 kg).
- 30 Micron filtration recommended.



PPOC76-3/4

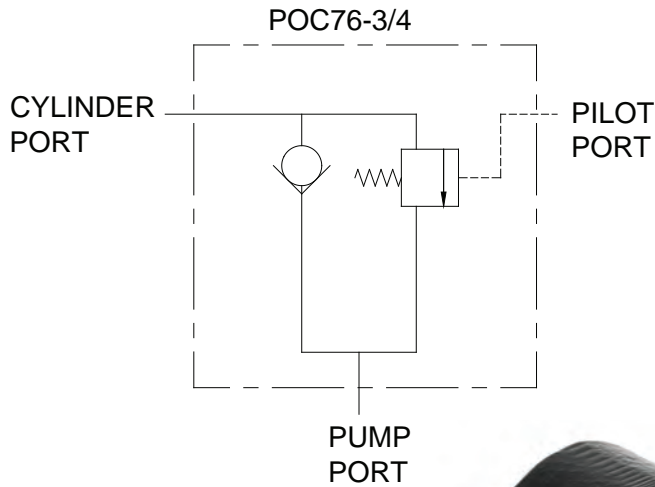


ISO 9001:2008 WITH DESIGN
Certificate #02.002.1



402.344.4434 • www.brand-hyd.com

POC76-3/4 Pilot Operated Check Valve (or Counter Balance Valve)



MATERIALS:

- Cast Iron Body
- Buna N O'Rings
- Heat Treated Steel Spool
- Delrin Check Poppet

FEATURES:

- PRECISION GROUND HEAT TREATED SPOOL that assures long life.
- FREE FLOW IN ONE DIRECTION and checked flow in the other (Not a zero leak check).
- BUILT IN DAMPENING CHAMBER provides smooth action when pilot pressure is applied.
- HOLES DRILLED CROSS-WISE allow the flow to gradually increase and decrease as it closes.

POC76-3/4 – GENERAL INFORMATION:

The Brand, pilot check valve will permit free flow in one direction and will check flow in the opposite direction. Applying pilot pressure to the pilot port of this valve moves the main spool, causing it to shift and unblock the flow. Pilot pressure must be 50 psi (3.4 bar) or greater. The POC76-3/4 is normally connected to the bottom of a cylinder holding a heavy load. This valve will prevent the load from free falling if a hose or pipe breaks. The valve meters the flow at the same rate in both directions which prevents cavitation and run-a-way. Metering the flow can be accomplished by varying the pilot pressure. The POC76-3/4 is available in production quantities of 100 and greater, unless in stock.

Paint (Optional) (P) painted black (other colors available, consult factory), (MP) epoxy coating.

DIMENSIONAL DATA: Inches & [millimeters]

POC76-3/4

