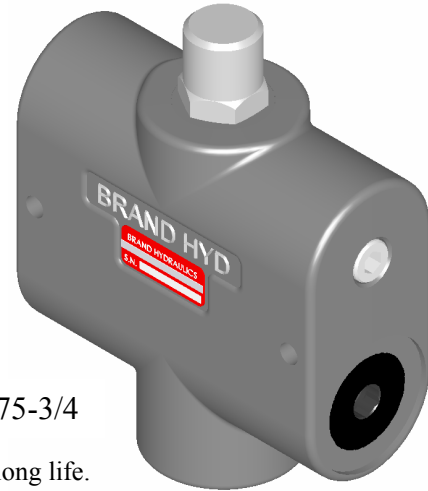
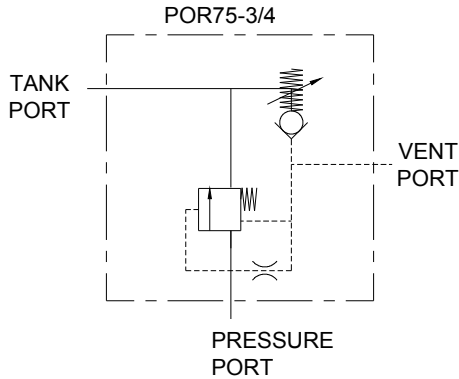


## ADJUSTABLE PILOT OPERATED RELIEF VALVE "POR75-3/4"



POR75-3/4

### FEATURES:

- **P**RECISION **G**ROUND **H**EAT **T**REATED **S**POOL that assures long life.
- **S**TEEL **B**ALL will not jam, lock or seize and will always open.
- **O**PENING AND **C**LOSING of this relief valve is very accurate concerning repeatability and is smooth and surgeless.
- **H**OLES **D**RILLED **C**RSS-**W**ISE allow the flow to gradually increase and decrease so that the change from closed to open is stepless and smooth.
- **D**AMPENING **O**RIFICE smoothes out pulsations caused by the poppet relief

### SPECIFICATIONS:

- **Pressure rating 3000 psi (207 bar).**
- **Rated for 0-30 gpm (0-114 lpm)**
- **Weighs 5 lbs (2.3 kg).**
- **30 Micron filtration recommended**

### MATERIALS:

- **Cast Iron Body**
- **Buna N O'Rings**
- **Heat Treated Steel Spool**

### POR75-3/4 – GENERAL INFORMATION:

The Brand, adjustable pilot operated relief valve maintains the same cracking pressure at low and high flows. As the pressure setting is exceeded a poppet type relief opens and allows a small pilot supply of fluid to escape a chamber at the end of the main spool. The escape of pilot supply causes the main spool to shift and thus opens a passageway which allows the main volume of pressurized fluid to escape to tank without passing over the poppet type relief. The higher the pump output the farther the spool shifts over to enlarge the opening to tank.

### DIMENSIONAL DATA (POR75-3/4): inches & [millimeters]

