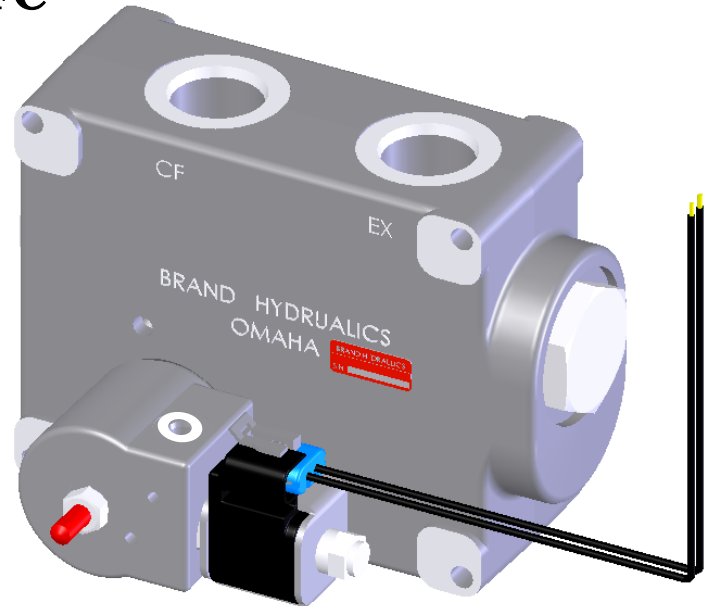
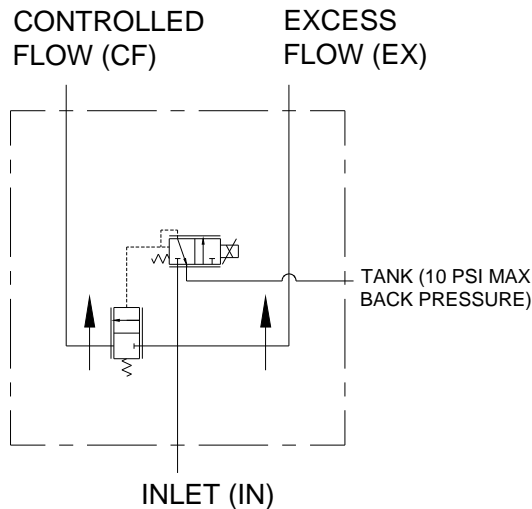


LARGE ELECTRONICALLY ADJUSTABLE PROPORTIONAL PRESSURE COMPENSATED FLOW CONTROL “LEFC”



FEATURES:

- **PRECISION GROUND HEAT TREATED SPOOL** that assures long life.
- **DIAMOND HONED SPOOL BORE** provides consistent spool fit with low leakage.
- **EVERY LEFC IS TESTED** for linearity and pressure compensation.
- **STANDARD 3-PORT** allows for pressure compensated flow out of two ports.
- **OPTIONAL MANUAL OVERRIDE** when electrical power is lost.

SPECIFICATIONS:

- See flow chart for capacity.
- **Max. 3000 psi cartridge input pressure.**
- **Nominally Rated for 3000 psi (207 bar).**
- **Tank Port - #4 SAE (10 psi (0.69 bar) MAX. back pressure)**
- **Weight 32-3/4 lbs. (14.9 kg).**
- **25-Micron Filtration or Better.**
- **Coil 12 VDC standard.**
 - 10.4 Ohms.
 - 14 Watts.
 - 1.15Amp max.
 - Rated 100% continuous duty cycle
- **Pulse Frequency (90 to 110 Hz)**
- **Operating Temperature: -20° to 210°F (-30° to 100°C)**

MATERIALS:

- **Cast Iron Body.**
- **Heat Treated Steel Spools.**
- **Buna N O'Rings.**

LEFC – GENERAL INFORMATION

The Brand, LEFC (large electronically adjustable proportional pressure compensated flow control) is an electronically controlled version of the original large FC51 style flow control valve. The LEFC performance as a flow control is very similar to the large FC51 because they both use the same spring and compensator spool. Thus, the control flow port (CF) and the excess flow port (EX) remain usable and pressure compensated.

The main advantage of the LEFC over the large FC51 is that the flow can be adjusted proportionally with a solenoid instead of manually. The orifice spool proportionally opens as the current through the solenoid increases, thus increasing the flow out of the CF port (similar to positioning the rotary side lever on the manual FC). The solenoid is connected to our optional EC – series controls which can be sold with the LEFC. Please see the **Electronic Controllers** section for your control needs. We also give the choice of coil voltage, coil terminal and maximum flow setting.

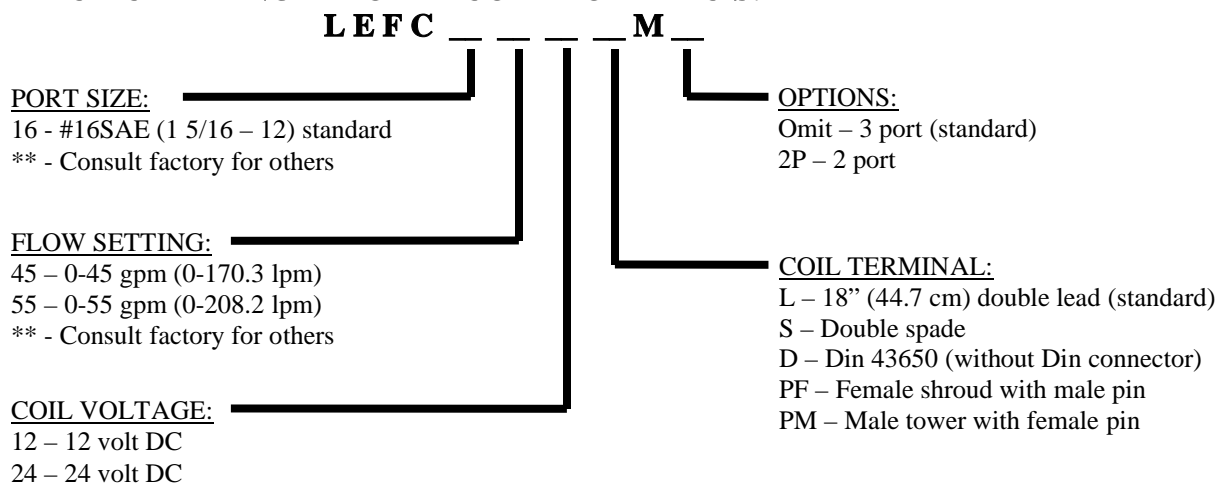
2-PORT- The 2-port (2P) option is a modified version of the standard 3-port EFC. This option lets the customer use the control flow port while the excess port is plugged. To use the EFC 2-port a pressure compensated pump is required. The 2-port can be converted to a 3-port by removing the EX plug.

LEFC – EXAMPLES OF COMMON MODEL CODES:

LEFC164512LM..... # 16 SAE ports, 45 gpm (170.3 lpm), 12 VDC coil, 18” (44.7 cm) double lead coil terminal and manual override.

LEFC165512LM.....# 16 SAE ports, 55 gpm (208.2 lpm), 12 VDC coil, 18” (44.7 cm) double lead coil terminal and manual override.

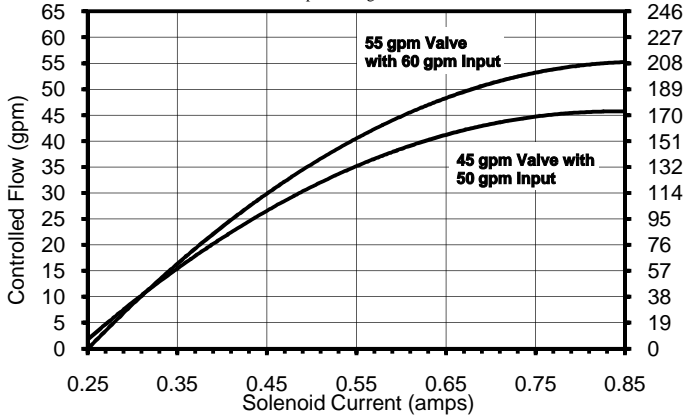
LEFC – CREATING A MODEL CODE FOR LEFC’S:



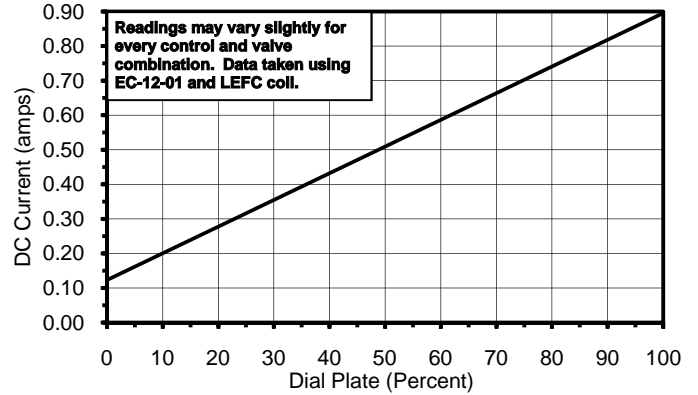
LEFC FLOW & PRESSURE INFO:

Controlled Flow vs. Solenoid Current

Oil Temp=110 deg. F w/ 140-147 SUS Oil



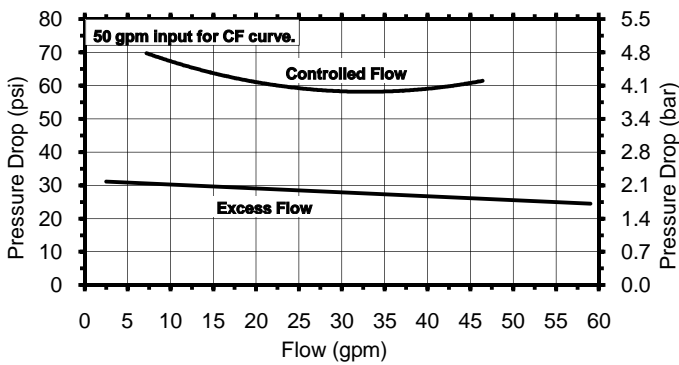
Current vs. Dial Plate for EC-12-01, EC-12-01L, and EC-12-02



Pressure Drop vs. Flow for 45 gpm Valve

Flow (lpm)

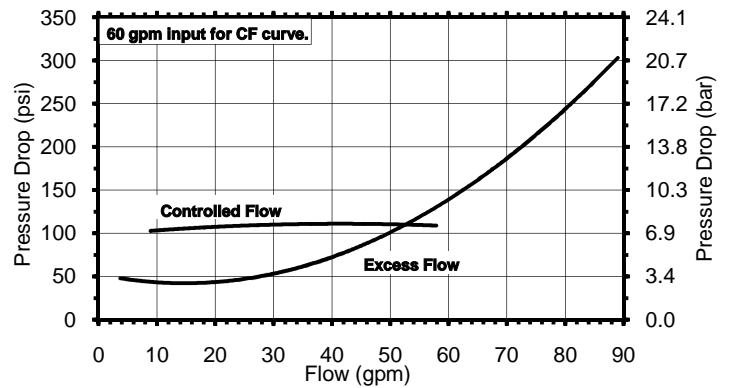
0 19 38 57 76 95 114 132 151 170 189 208 227



Pressure Drop vs. Flow for 55 gpm Valve

Flow (lpm)

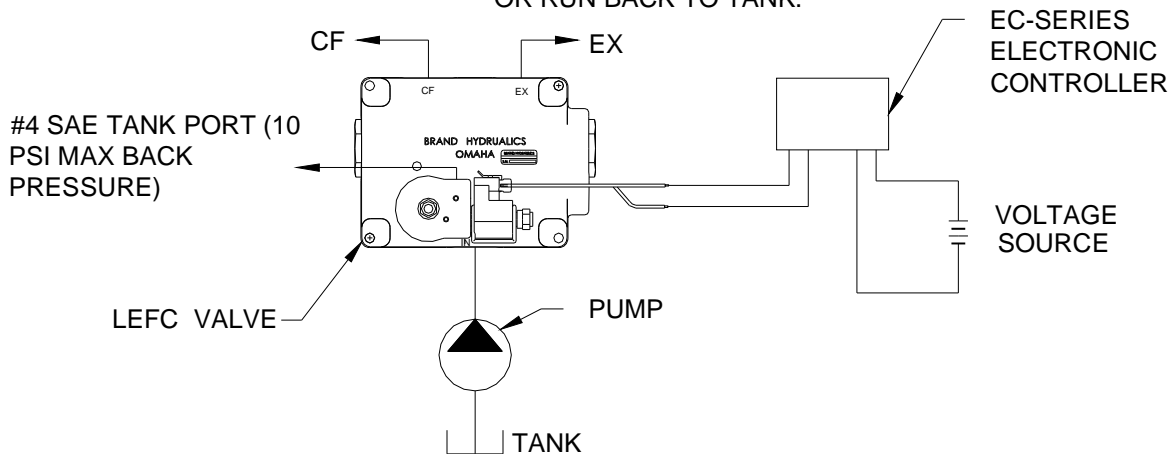
0 38 76 114 151 189 227 265 303 341



SCHEMATIC DRAWING:

CF-CONTROLLED FLOW
PRIORITY PORT, PRESSURE
COMPENSATED

EX-EXCESS FLOW IS USABLE AND
PRESSURE COMPENSATED. THE
FLOW CAN BE USED TO DO WORK
OR RUN BACK TO TANK.



DIMENSIONAL DATA:

