



## INSTALLATION SHEET FOR SERIES 36/38 SECTIONAL DIRECTIONAL CONTROL VALVES KEEP WITH PRODUCT UNTIL INSTALLED

ADDITIONAL SHEETS MAY BE PRINTED OUT FROM OUR WEBSITE [WWW.BRAND-HYD.COM](http://WWW.BRAND-HYD.COM) UNDER PRODUCT CATALOG SECTION

**Notice:** Series 36 Work Sections have #8(3/4-16) SAE O-ring Ports; Series 38 Work Sections have #10(7/8-14) SAE O-ring Ports. The Inlet Sections for both are #10 SAE.

How do I adjust pressure relief?

### **Inlets with Pilot relief:**

This relief is identified by the 11/16" hex nut and 3/16" hex set screw in the Inlet section. To increase the relief setting, loosen the hex nut and turn the set screw clockwise. One ½ turn clockwise will increase the pressure ~200psi [13.8bar].

### **High Spool Sections with Port Relief:**

**Inlets with "C" & "R" style relief:** This relief is identified by a black 1" hex lock nut. Once the lock nut is loosened, the relief can be adjusted using a 5/16" hex wrench. The factory relief setting will be stamped on the set screw. The pressure range your valve will work best in will depend on which spring was installed, if your spring is:

White (p/n: P1279): 2400 - 3000psi [165.5-206.8bar]

Yellow (p/n: P1270): 1400 - 2500psi [96.5-172.4bar]

(Spring will have ~7.5 coils, cross section dia. ~ 0.119 [3.02mm])

Orange (p/n: P1270-360): 700 - 1400psi [48.3-96.5bar]

Yellow (p/n: DC7594): 300 - 700psi [20.7-48.3bar]

(Spring will have ~8.25 coils, cross section dia. ~ 0.090 [2.29mm])

Clockwise rotation of the screw will increase the relief pressure.

Mounting Surface – The valve must be mounted on a flat surface. It is important not to bend or twist the castings when mounting because this may cause the valves to bind.

Can I paint my valve? –Yes, as long as all the ports are properly plugged. Failure to take the proper precautions prior to painting your valve may void your warranty.

How do I assemble the handle to the valve?

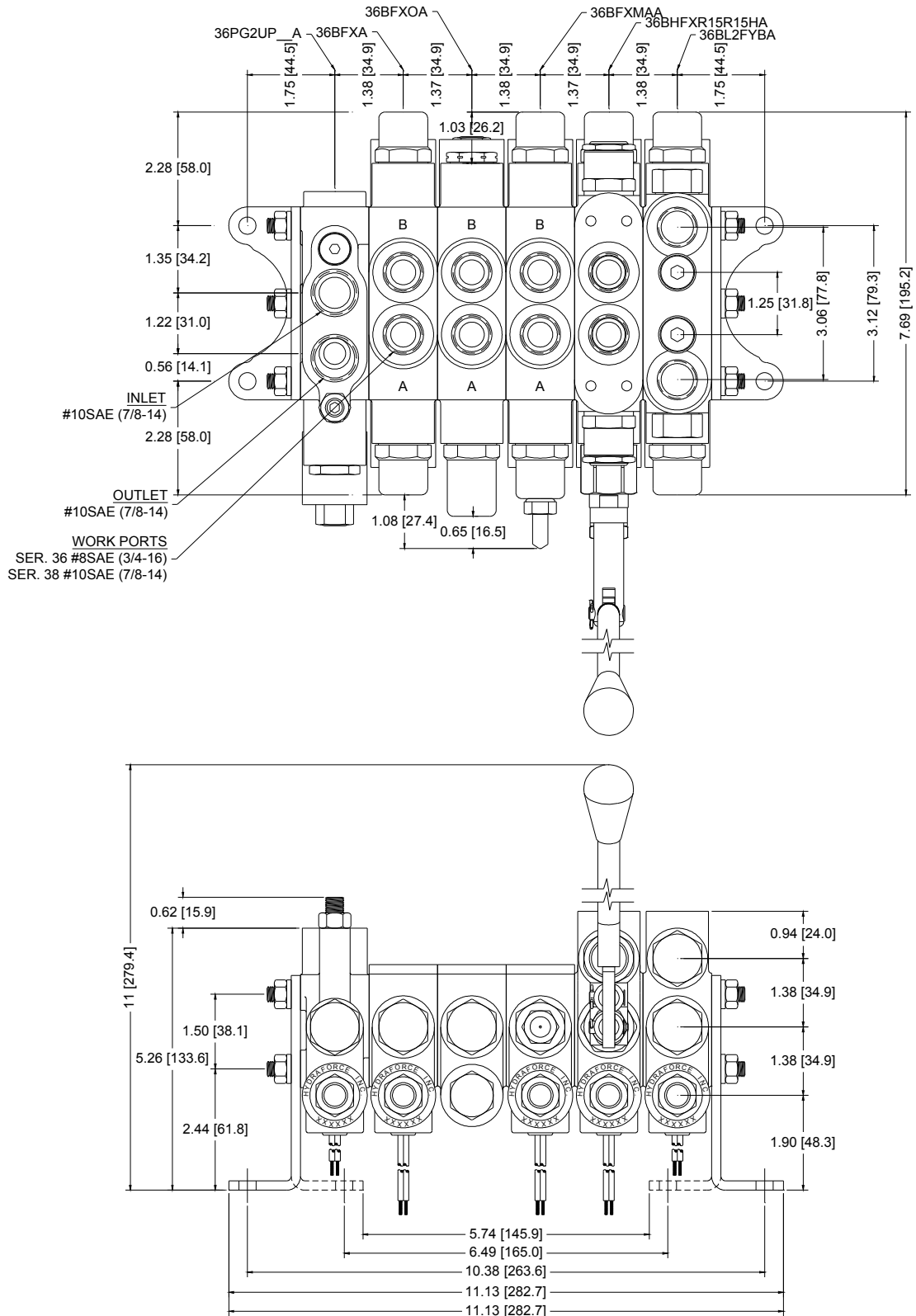
The clevis will already be attached to the valve section. The handle attaches with the supplied pins and pin clips. Standard position for the handle is for the handle knob to be facing above and away from the valve. Handles are offered Bent, Straight, or Bent to 90°.

What is the correct torque for the tie rod nuts?

The correct torque spec on the tie rod nuts is 85 inch pounds [9.6Nm]. Both nuts on each rod should be tightened at the same time to prevent bind in the section.

Which Cartridge goes in the Inlet/Outlet section? – The C300-00000 or C30M-00000, i.e. Normally Open cartridges are installed in the Inlet/Outlet section.

Which Cartridge goes in the Work section(s)? – The C100-00002 or C102-00000, i.e. Normally Closed cartridges are installed in the Work section(s).



**Figure 1: Dimensional data for various Series 36/38 valve sections in inches & [millimeters].**