



## INSTALLATION SHEET FOR MB MONOBLOCK DIRECTIONAL CONTROL VALVES KEEP WITH PRODUCT UNTIL INSTALLED

ADDITIONAL SHEETS MAY BE PRINTED FROM OUR WEBSITE [WWW.BRAND-HYD.COM](http://WWW.BRAND-HYD.COM) UNDER PRODUCT INSTALLATION SECTION

### Mounting Surface –

The valve must be mounted on a flat surface. It is important not to bend or twist the casting when mounting because this may cause the spools to bind.

### Can I paint my valve? –

Painting valves is okay as long as the following precautions are taken: 1- All ports must be plugged and 2- the spool must be masked or taped off completely. Any paint on the spool will cause leakage when it chips off. Warranty is void if any valve is returned with paint on the spool.

Valves can also be painted by the factory by adding “P” to the beginning of the model code, e.g. PMB22TSTKAB

### How do I assemble the handle to the valve? (L-Handle Option)

To install the handle, place the threaded end of the handle in either hole of the handle adapter and lock the handle into position with the jam nut. Depending on the mounting orientation of the valve this will allow the handles to be positioned either vertically or horizontally.

### How do I assemble the handle to the valve? (A, A1, A2 & A3-Handle Option)

To install the handle, place the threaded end of the handle in the hole of the handle adapter and lock the handle into position with the jam nut.

### Can I adjust the relief on my valve?

First, remove the acorn nut with a ½” wrench. Next, loosen the ½” hex jam nut. To adjust the relief, use a 5/32” Allen wrench. One turn CW (clockwise) will increase the system pressure by 300psi (21 Bar). Finish by tightening the jam nut and reinstalling the acorn nut.

The standard factory setting is 2000psi (138bar) and is adjustable from 1200 to 3000psi (83- 207bar).

Other ranges are available:

- 500-1100psi (34-76bar) – Use spring P/N: S065 (Silver)
- 1200-3000psi (83-207bar) – Use spring P/N: S059 (Brown, standard)
- 3100-4000psi (214-276 bar) – Use spring P/N: S064 (Blue)

### Can I convert my valve to utilize “Power Beyond”?

Yes, order a LV2-W cartridge kit and install it in the outlet on the side of the casting. Then remove the plug in the upper outlet for low pressure return to tank. See the dimensional schematic on page 3.

Valves can also be order from the factory with the cartridge kit already installed by adding “W” to the end of the model code, i.e. MB22TSTKABW

Can I convert my valve to operate in a “Closed” system?

Yes, order a LV2-C cartridge kit and install it in the outlet on the side of the casting, i.e. the same place the Power Beyond cartridge is installed, see the dimensional schematic below.

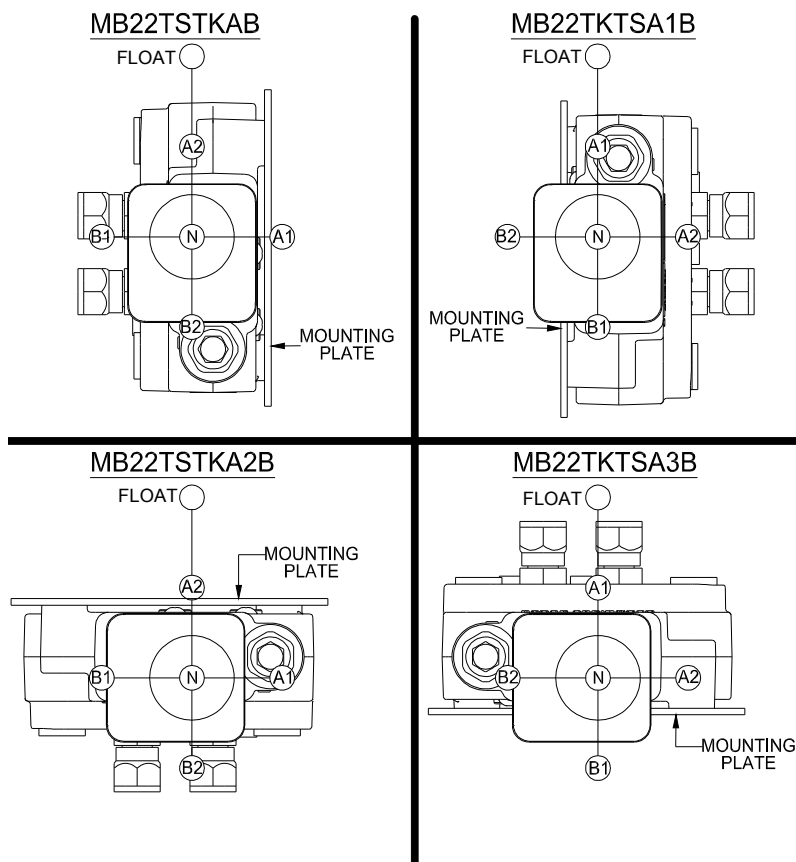
Valves can also be order from the factory with the cartridge kit already installed by adding “C” to the end of the model code, i.e. MB22TSTKABC

Can I convert my joystick to a different option? [Note: “A” & “A1” not field convertible to “A2” or “A3”]

To convert “A” to “A1”, see the instructions: [“Instructions for Converting the LV/MB Joystick from “A” to “A1”](#)  
 To convert “A2” to “A3”, see the instructions: [“Instructions for Converting the LV/MB Joystick from “A2” to “A3”](#)

How does joystick movement actuate the MB monoblock valve?

See Figure 1 below.



**Figure 1: Joystick Options**

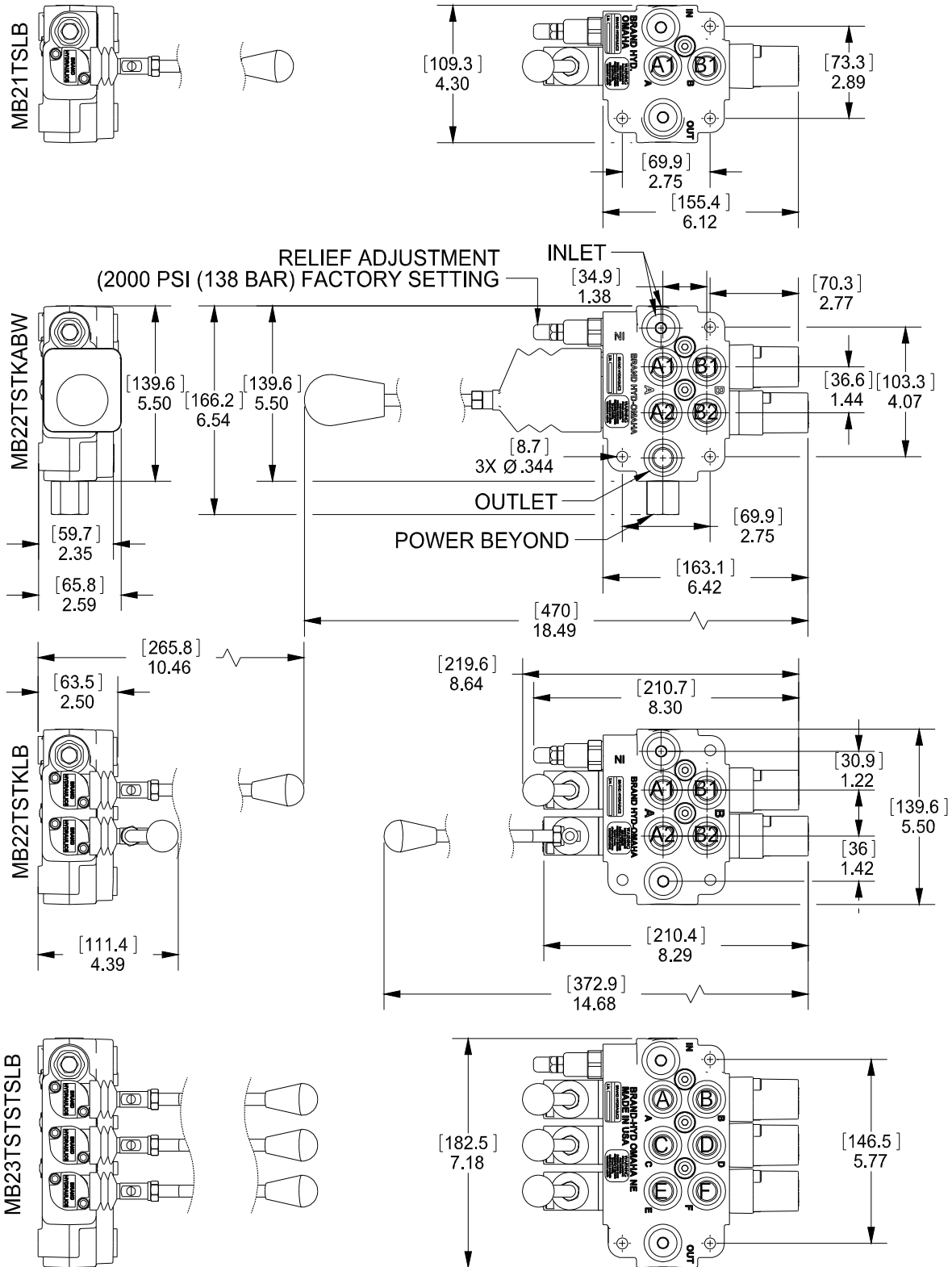


Figure 1: Dimensional data for MB valves in inches & [millimeters]