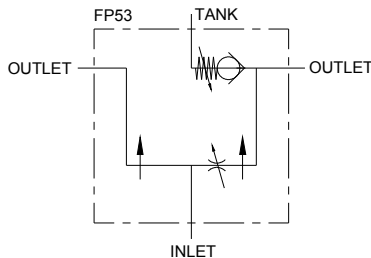
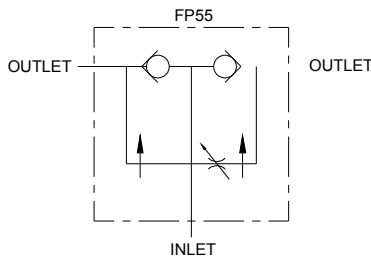
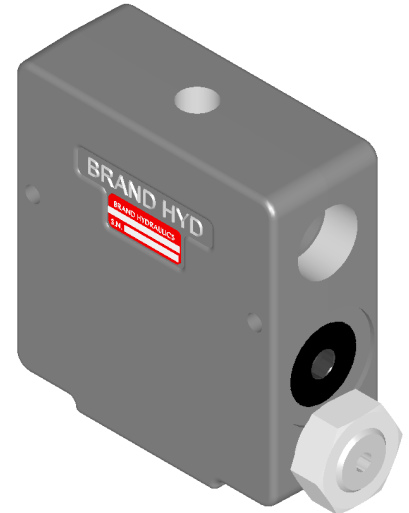


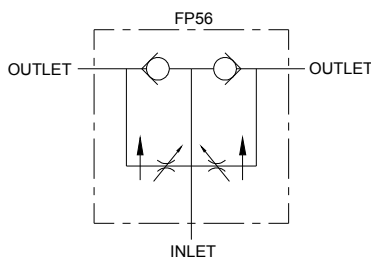
ADJUSTABLE PROPORTIONAL FLOW DIVIDERS “FP”



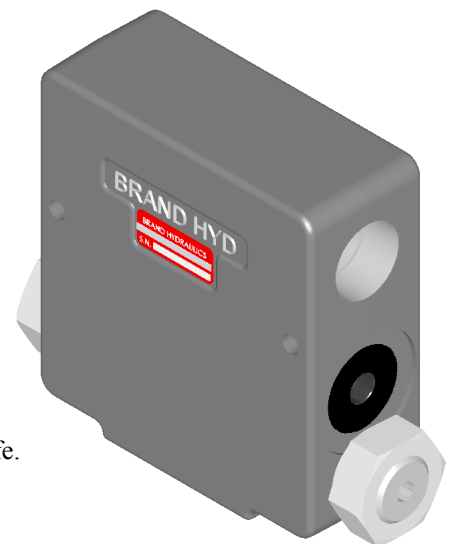
FP53-3/4



FP55-3/4



FP56-3/4



FEATURES:

- **PRECISION GROUND HEAT TREATED SPOOL** that assures long life.
- **PRESSURE COMPENSATION** for both outlets.
- **EVERY FP IS TESTED** for adjustable flow and pressure compensation.
- **DIVIDES INLET FLOW INTO TWO FLOWS** of equal flow or a ratio up to 95:5.
- **OPTIONAL FREE REVERSE FLOW** allows fluid to move from the outlet ports to the inlet port.
- **OPTIONAL ONE OR TWO ADJUSTABLE ORIFICES** allows the customer to control the flow.

SPECIFICATIONS:

- **Rated for 3000 psi (207 bar).**
- **Rated for 0-30 gpm (0-114 lpm).**
- **30-Micron filtration recommended.**
- **Weights 7-1/2 lbs. (3.4 kg).**

MATERIALS:

- **Cast Iron Body**
- **Buna N O'Rings**
- **Heat Treated Steel Spool**
- **Heat Treated Free Reverse Check Seat**

FP – GENERAL INFORMATION

The Brand, adjustable proportional flow divider comes in three basic models FP53, FP55 and FP56. The FP series receives a single stream of fluid and divides it into two streams. The customer has the ability to adjust one (FP53 or FP55) or both (FP56) outlet flows. The initial flow settings will not fluctuate even though the work being done by one of the streams is much greater than the work being done by the other. The ratio of the outlet streams remains constant even when the inlet flow increases or decreases.

FP53 – has one fixed orifice, one adjustable orifice and a relief for the outlet port on the side of the valve with the adjustment screw. The FP53 receives a single stream and divides into two streams. With the FP53 it is possible to control the flow out one outlet up to 60% of input. The two outlet flows are pressure compensating and the sum of said flows equals the inlet flow.

FP55 – has one fixed orifice, one adjustable orifice and free reverse flow for both outlets. The FP55 receives a single stream and divides into two streams. With the FP55 it is possible to control the flow out one outlet up to 60% of input. The two outlet flows are pressure compensating and the sum of said flows equals the inlet flow.

FP56 – has two adjustable orifices and free reverse flow for both outlets. The FP56 receives a single stream and divides into two streams. With the FP56 it is possible to control the flow out two outlets up to 95% of input, and to vary the pressure drop through the valve. The two outlet flows are pressure compensating and the sum of said flows equals the inlet flow.

FP – COMPLETE LIST OF MODEL CODES:

- FP53-3/4**.....3/4" NPT ports, 3/8" NPT tank port, inlet flow 0-30 gpm (0-114 lpm), one adjustable orifice and an adjustable relief.
- FP55-3/4**.....3/4" NPT ports, inlet flow 0-30 gpm (0-114 lpm), one adjustable orifice and free reverse flow.
- FP56-3/4**.....3/4" NPT ports, inlet flow 0-30 gpm (0-114 lpm), two adjustable orifices and free reverse flow.

DIMENSIONAL DATA (FP53-3/4 or FP55-3/4 SHOWN): inches & [millimeters]

